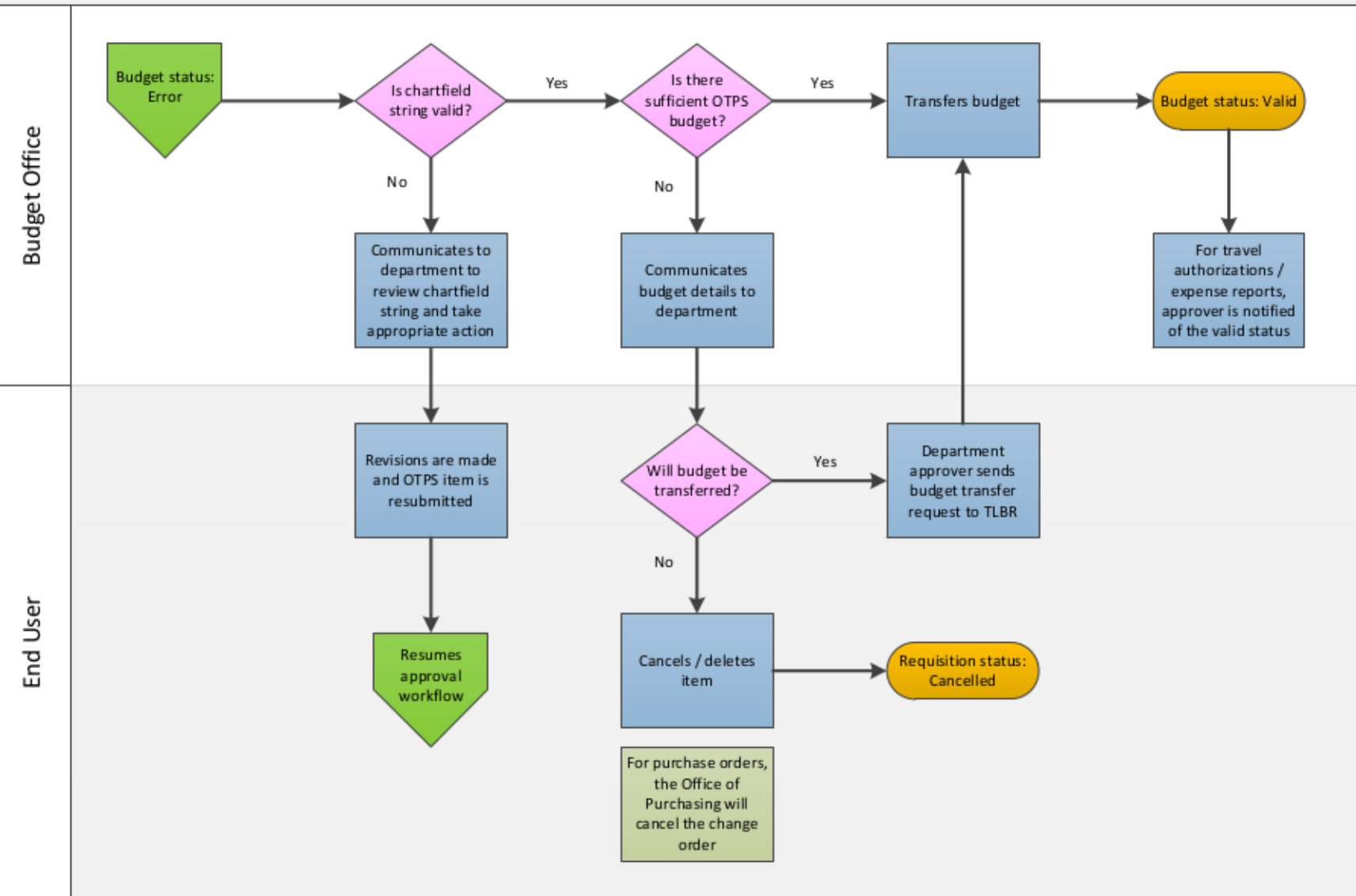


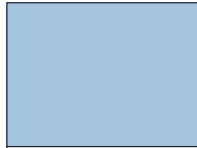
# OTPS Item Budget Error Workflow

eProcurement / Travel and Expense Center



**Workflow:** A series of processes that achieve a specific result.

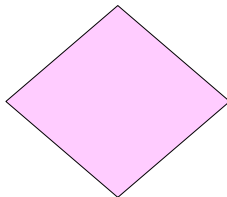
### Legend



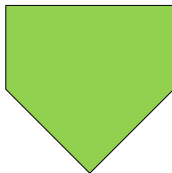
**Process:** A series of steps that achieve a specific outcome.



**Status:** A progress indicator within a workflow.



**Decision Point:** A point when a decision may redirect or end normal workflow.



**Workflow Connector:** Connects one workflow to another.



**Notes:** A written record of information relevant to a process or workflow.