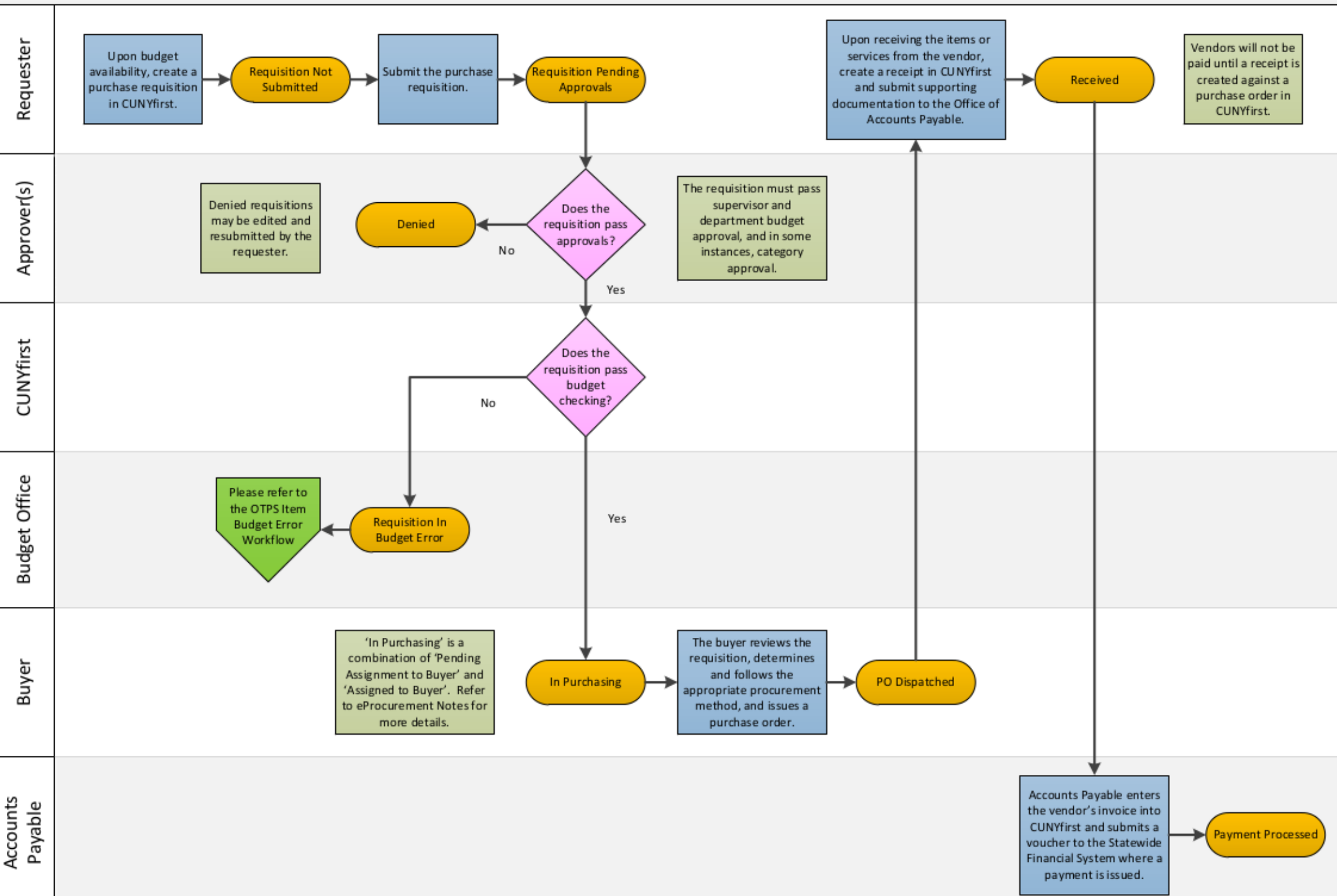
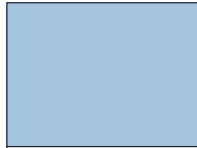


eProcurement Workflow



Workflow: A series of processes that achieve a specific result.

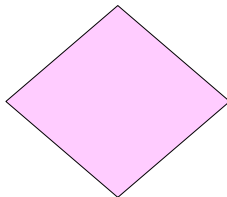
Legend



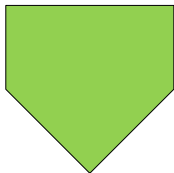
Process: A series of steps that achieve a specific outcome.



Status: A progress indicator within a workflow.



Decision Point: A point when a decision may redirect or end normal workflow.



Workflow Connector: Connects one workflow to another.



Notes: A written record of information relevant to a process or workflow.